



**ELECTORAL
COMMISSION**
TE KAITIAKI TAKE KŌWHIRI



Election Access Fund: What it is and how to have your say about how it could work

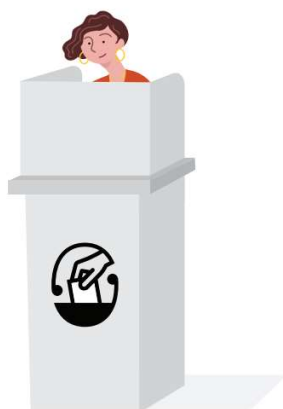


July 2022

About the Electoral Commission



The Electoral Commission looks after the running of **parliamentary elections** in New Zealand.



Parliamentary elections are when people get to **vote** in:

- **general elections**
- **by-elections.**



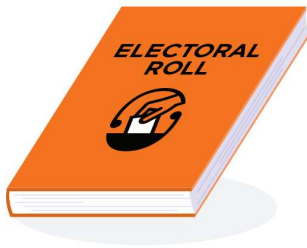
When you **vote** you get to have your say about who you think should win an election.



General elections are when people vote on who they want in Parliament.



By-elections happen when a member of parliament leaves their role before a general election so their area votes on who will replace them.



The Electoral Commission also works to keep the **electoral rolls** up to date.



The **electoral roll** is a list of all the people who have **enrolled** to vote.

Enrolling means you fill in a form to add your name to the **electoral roll**.

About the Election Access Fund



The Electoral Commission is setting up a new fund called the **Election Access Fund**.



In this Easy Read document we will call the Election Access Fund the **Fund**.



The Fund is to support disabled people to pay for things to assist them to stand as candidates in parliamentary general elections and by-elections.



Candidates are people who:

- stand for election
- **campaign** to get people to vote for them.



Campaigning means candidates:

- tell people what they want to do if they get into parliament
- ask people to vote for them.



The Fund can be used by disabled candidates to cover disability-related costs of standing / campaigning in an election.



Some ideas of what the Fund could be used for are:

- paying to having New Zealand Sign Language interpreters at campaign events
- paying for the travel or accommodation costs of a support person at campaign events.





The Fund will not cover costs such as advertising as this is a cost that all candidates have to cover.



1 million dollars has been set aside for the Fund.



The Electoral Commission is setting up the Fund to open from about September 2022.



Applicants can use it for general elections and by-elections.



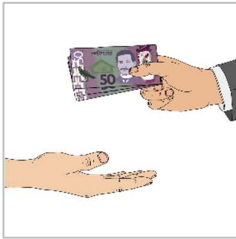
You can find more information about the Fund on the Electoral Commission **website**:

www.elections.nz/election-access-fund

Have your say about the Election Access Fund



The Electoral Commission wants to hear from people about:



- who should be able to apply to the Fund
- what sort of disability related costs the Fund could cover
- how people should be able to apply for the Fund.



The Electoral Commission wants to hear from:

- disabled people
- disabled people's organisations
- political parties
- other people / organisations who are interested.





You have until **Sunday 14 August 2022** to have your say.



You can have your say by filling in an online **survey** on the Electoral Commission **website**:

www.elections.nz/election-access-fund/survey



A **survey** is a list of questions that people answer to say what they think.



You can also download / print the survey from this **website** link:

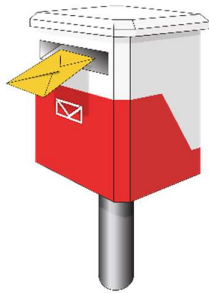
<https://elections.nz/getting-involved/election-access-fund/make-your-submission>

You can **email** or **post** your survey answers to:



Email:

electionaccessfund@elections.govt.nz



Post:

The Election Access Fund

PO Box 3220

Wellington 6140



If you would like a print out of the survey questions posted to you:

Phone / text: 027 232 2019

Phone: 0800 36 76 56



Email:

electionaccessfund@elections.govt.nz

You can also email your answers via audio or video to:



Email:

electionaccessfund@elections.govt.nz



If you would like to give your answers in New Zealand Sign Language you can do so through this **website**:

www.seeflow.co.nz/direct



If you have any questions you can talk to:



Stacey Knott at the Electoral Commission by:

Phone / text: 027 232 2019

Phone: 0800 36 76 56



Email:

electionaccessfund@elections.govt.nz



This information has been written by the Electoral Commission.



It has been translated into Easy Read by the Make It Easy service of People First New Zealand Inc. Ngā Tāngata Tuatahi.



The ideas in this document are not the ideas of People First New Zealand Inc. Ngā Tāngata Tuatahi.



Make It Easy uses images from:

- Changepeople.org
- Photosymbols.com
- Sam Corliss
- Huriana Kopeke-Te Aho.



Some images were also provided by the Electoral Commission.



All images used in this Easy Read document are subject to copyright rules and cannot be used without permission.

